



# Retention and Enrollment

Faculty Senate 11/18/2021

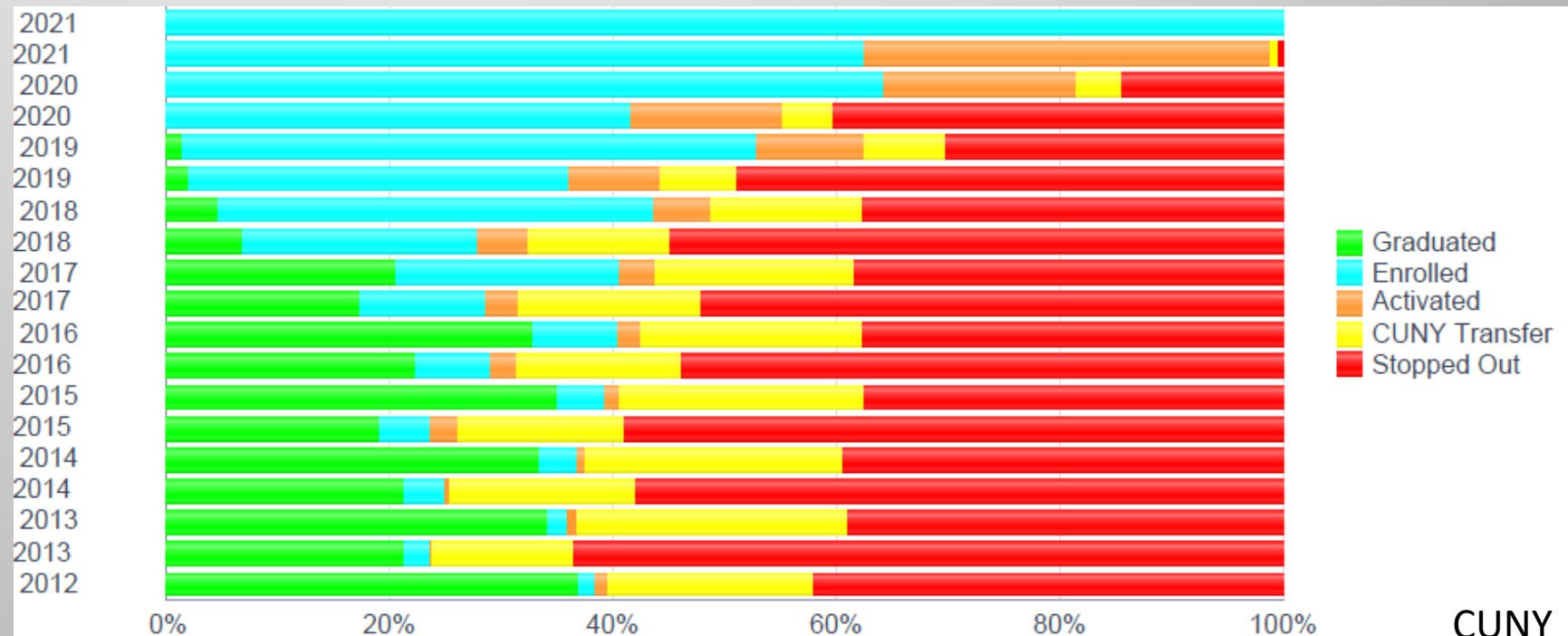
Ralf Peetz

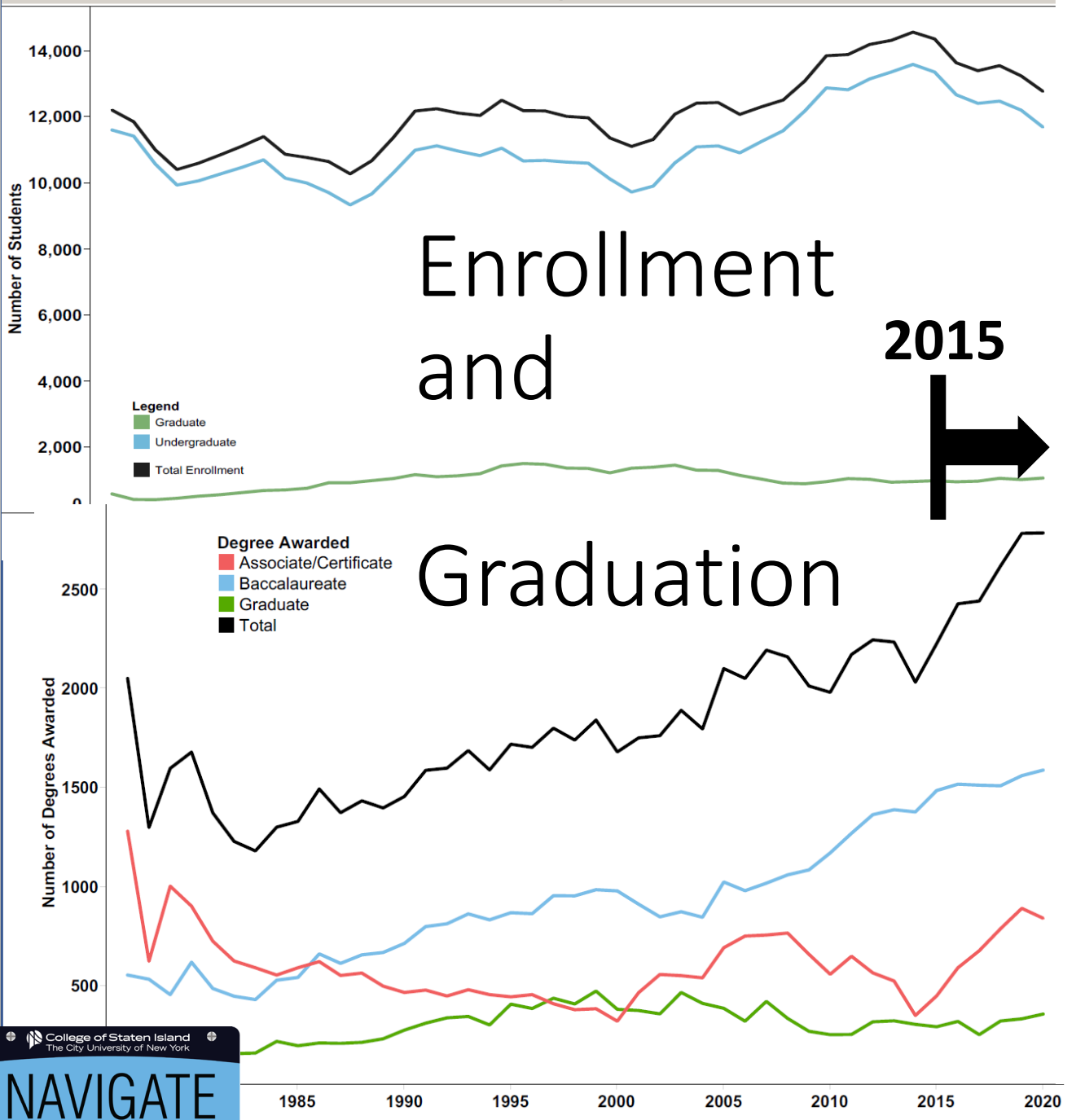


# Overall Enrollment is Complex

- Balance between students joining and leaving
- Joining: First-Year Students, Transfer-in, Readmits, Returning Adults ....
- Leaving: Graduates, Transfer-outs, Dismissals, Stop Outs

## Cohort Tracking





### Cumulative Effects:

Students from “bumper crop” years are graduating:  
 more graduates absolute

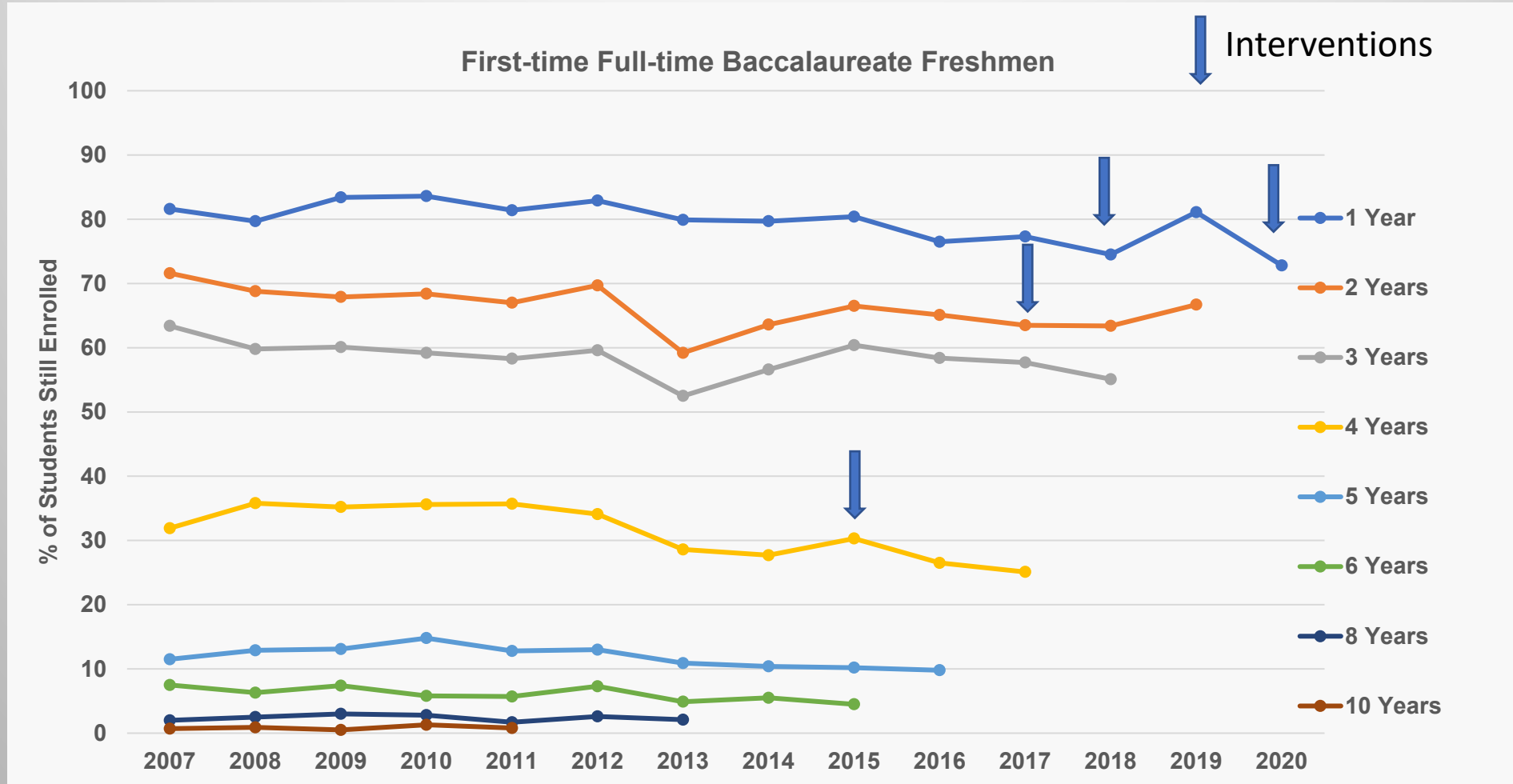
Graduation rates increased as student success effort:  
 more graduates relative and absolute

3-year CSI associate graduation rate increased from  
**5.3% to 14.5%**  
 (Fall 2014 and 2017 cohorts, respectively)

4-year CSI baccalaureate graduation increased from  
**21.1% to 30.5%**  
 (Fall 2013 and 2016 cohorts, respectively)

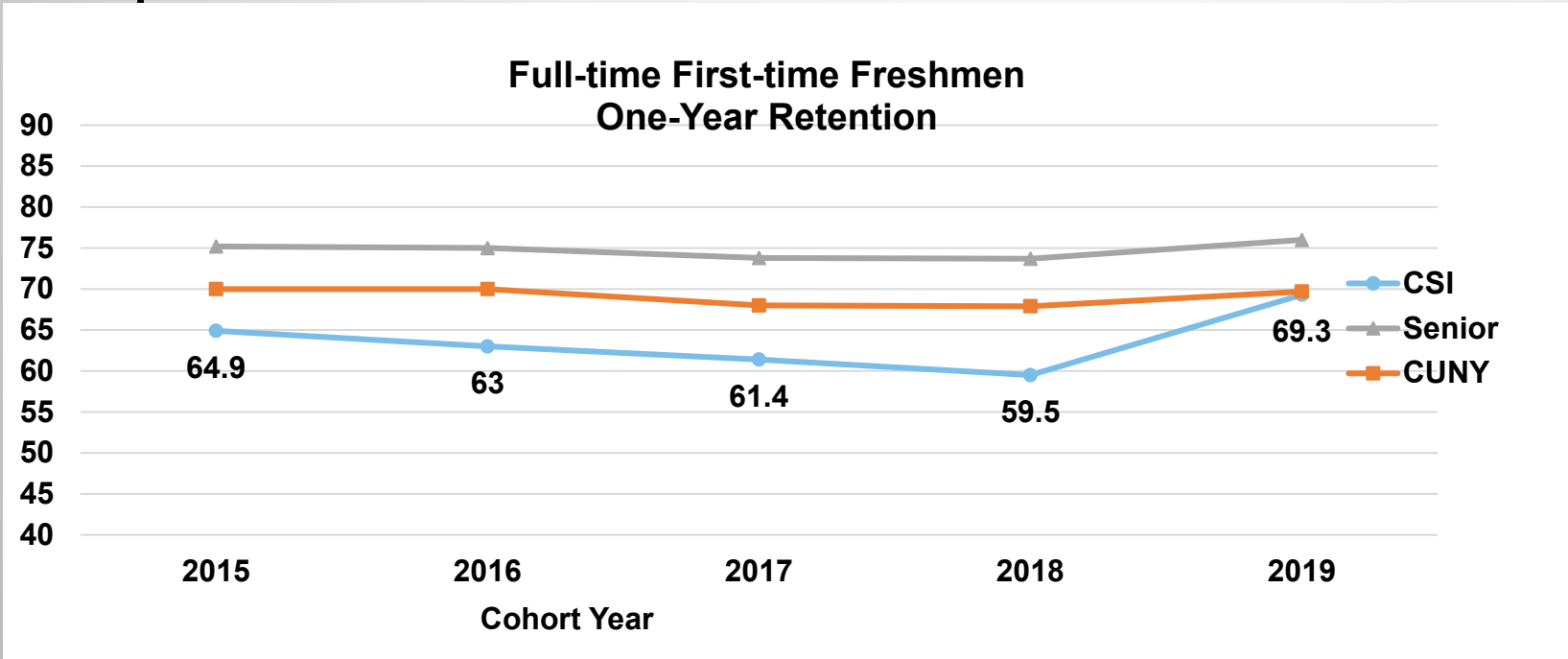


# Retention over Time





# Impact of First Year - Retention



CUNY PMP Data

2017: Stopped the trend for bacc., but then changes in admissions standards, 2019 multiple measures, were prepared

2019: Full Implementation of Block Scheduling with

Degreemaps, 15cr/semester, Math, Eng, 8cr in area of choice

## 2019 Cohort - Major Drivers:

Associates:

Comp Sci, Lib Arts and Science, Nursing

Baccalaureates:

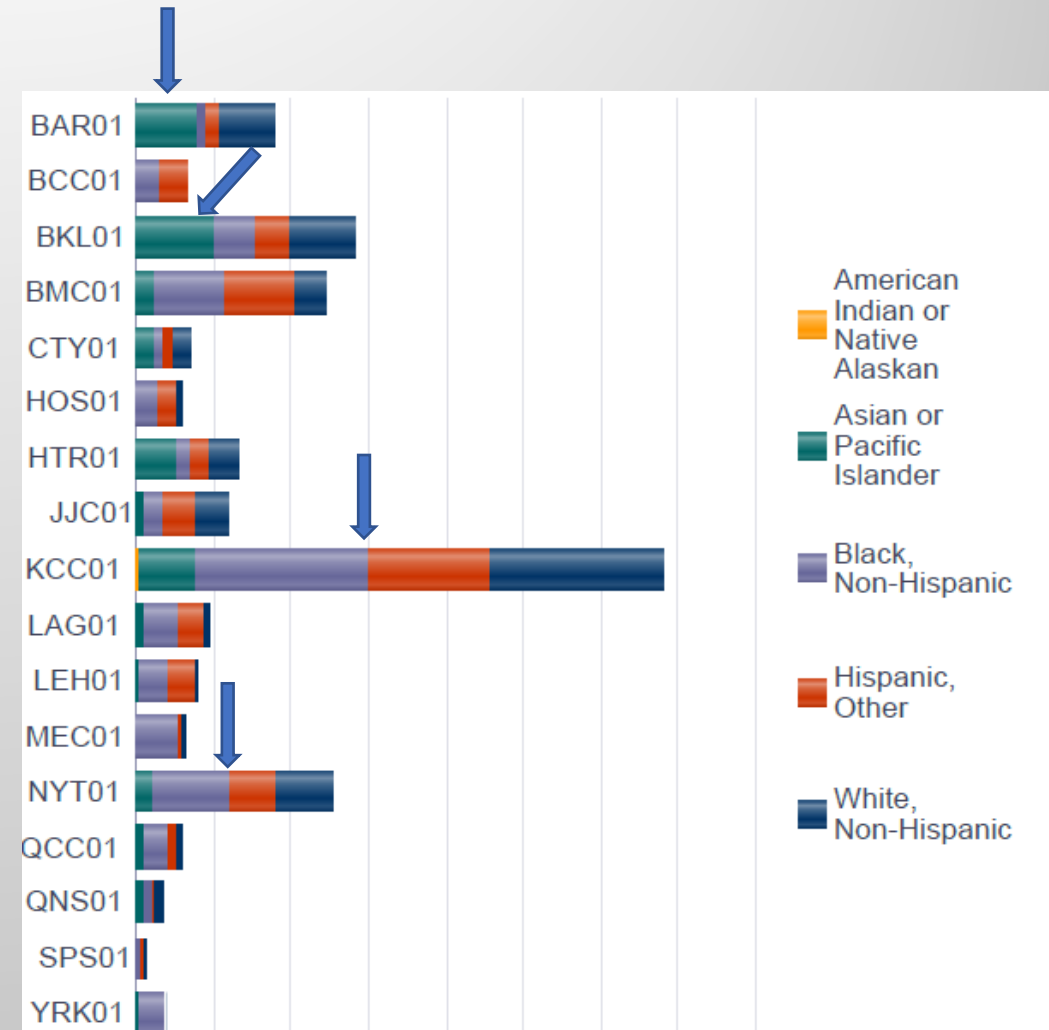
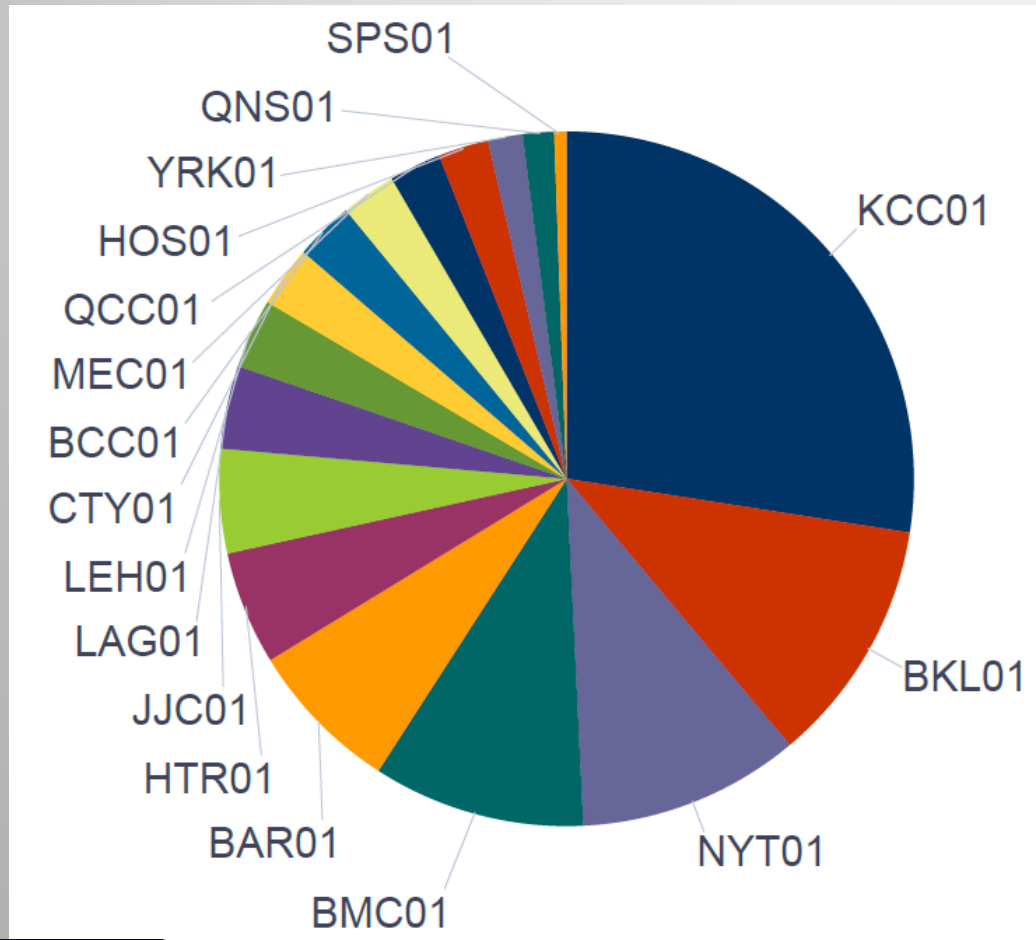
Business, Comp Sci, Elec. Eng., English

**THANK YOU FOR THE PRO-ACTIVE ADVISING IN DEPARTMENTS, RESPONDING TO EARLY/MIDTERM SURVEYS**





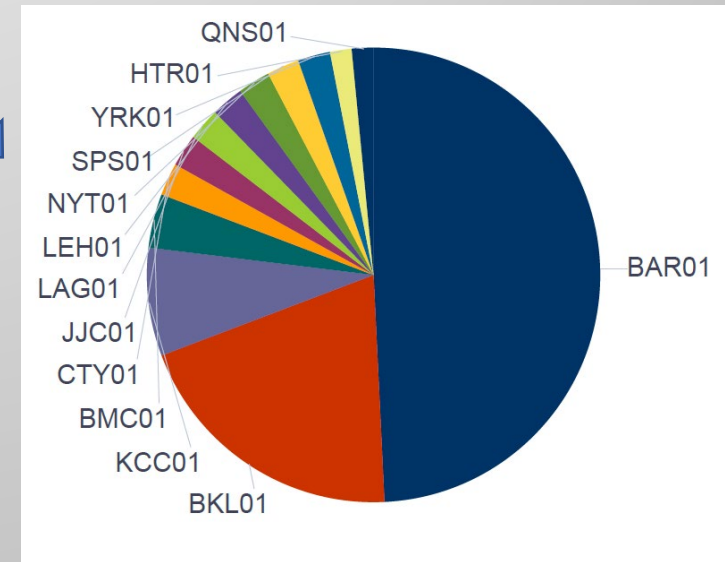
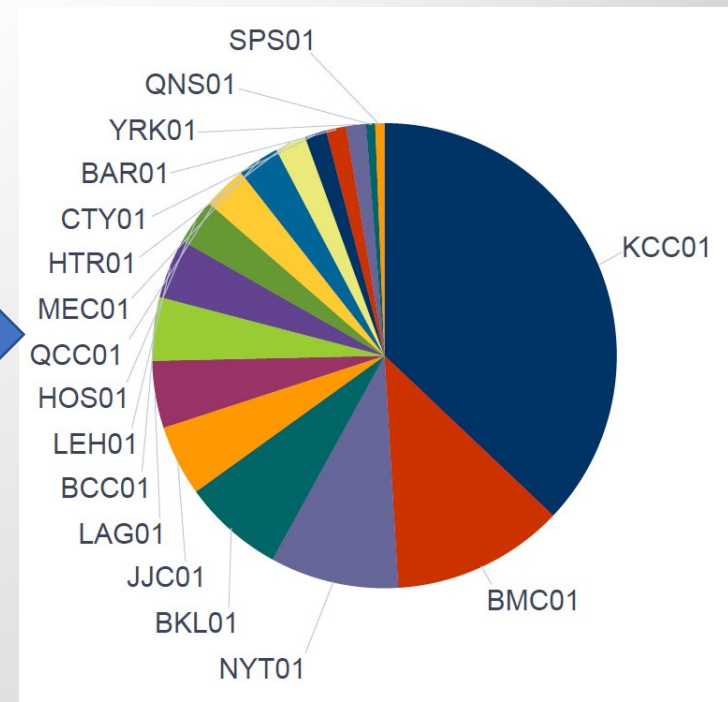
# Transfer Outs by Destination (5-Year Totals)



# Transfer Outs by Plan

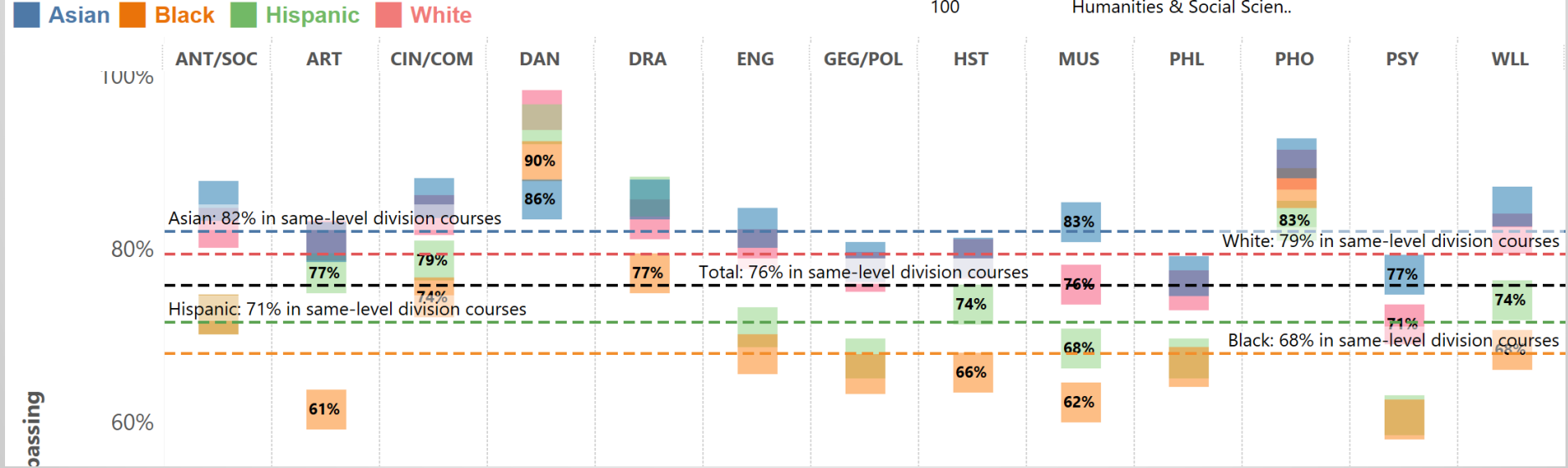
Source Academic Plan	#	%
Liberal Arts & Sciences AA		32.0%
Undeclared Health Sciences AAS		10.9%
Liberal Arts & Science AS		9.2%
Business AAS		8.2%
Business BS		5.2%
Biology BS		3.6%
Psychology BS		2.5%
Undeclared Health Sciences BS		2.5%
Engineering Science AS		2.3%
Computer Technology AAS		2.2%
Computer Science BS		2.0%
Undeclared BA		1.8%
Sociology/Anthropology BA		1.7%
Accounting BS		1.6%
Psychology BA		1.4%
Science Letters & Society BA		1.3%
English BA		1.3%
Communications BS		1.2%
Engineering Science BS		1.1%
		1.1%

... < 1%

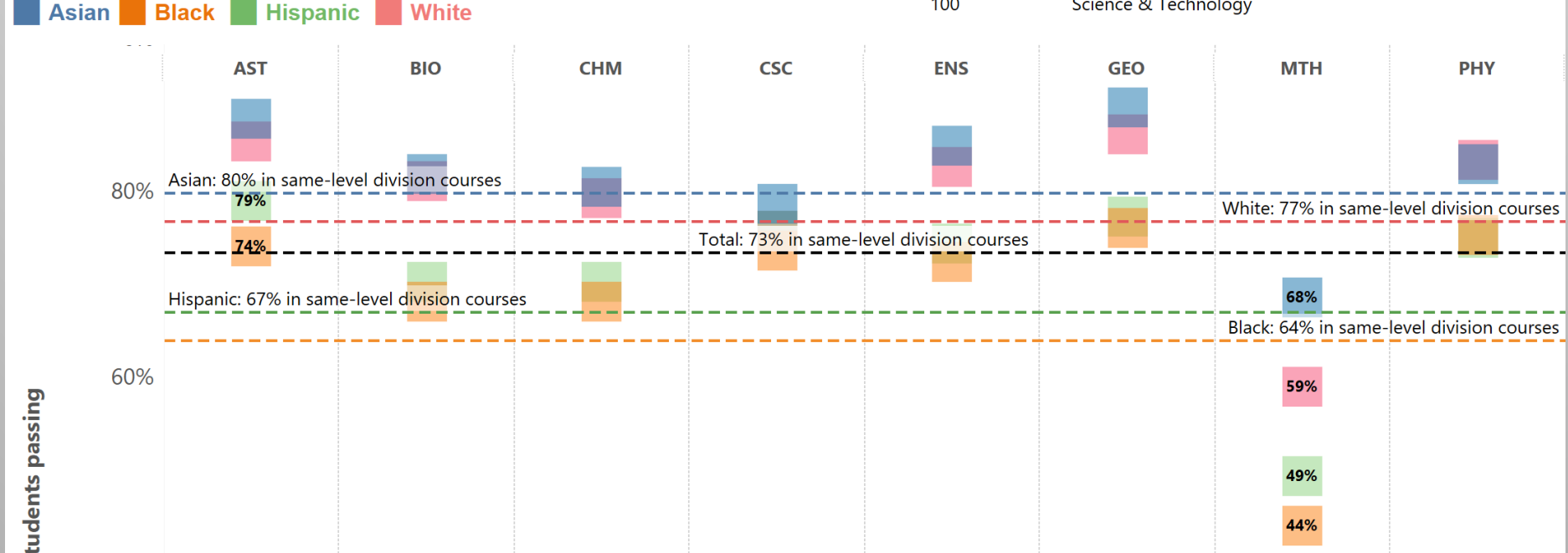




# 100-level Humanities & Social Sciences pass rates



# 100-level Science & Technology pass rates



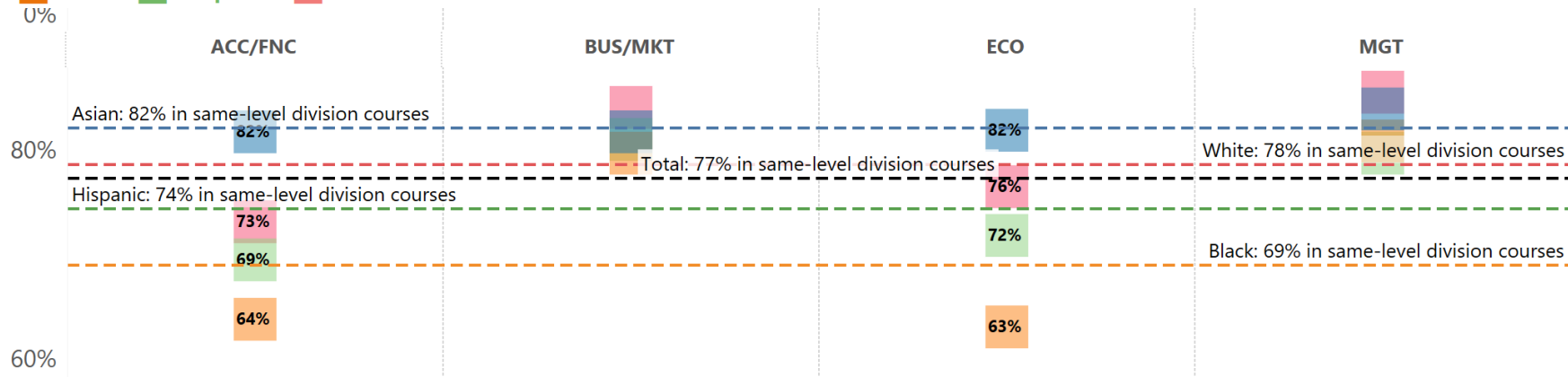


# 100-level School of Business pass rates

Asian Black Hispanic White

Class Level  
100

Division  
School of Business

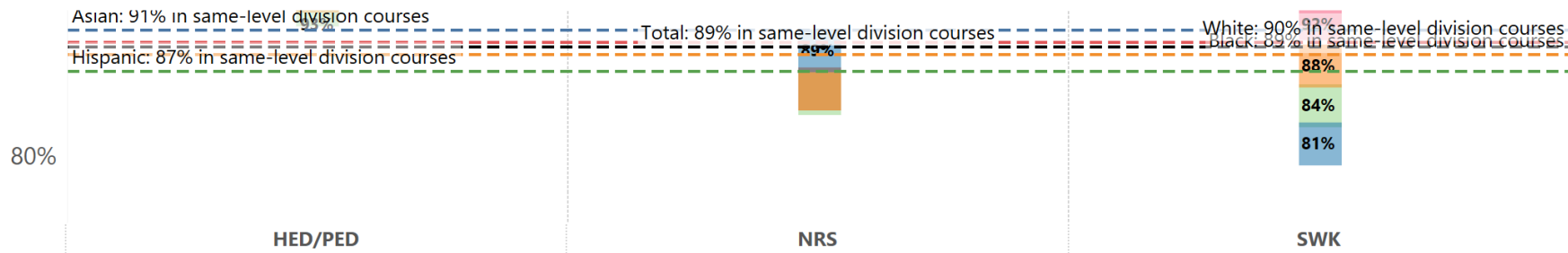


# 100-level School of Health Sciences pass rates

Asian Black Hispanic White

Class Level  
100

Division  
School of Health Sciences



CSI/ OIRA

# Inaugural Transformation Accelerator Cohort

**Aim: Eliminate race, ethnicity, and income as predictors of student success**

- Albany State University (Ga.)
- California State University-Fresno
- Central Connecticut State University
- **College of Staten Island CUNY**
- Metropolitan State University of Denver
- PASSHE/Bloomsburg University, Lockhaven University, Mansfield University (Penn.)
- SUNY College at Oswego
- Texas A&M University-Corpus Christi
- Texas A&M Kingsville
- Prairie View A&M University (Texas)
- Texas A&M University System
- Texas A&M University-San Antonio
- University of Hawaii at Hilo
- University of Maryland Eastern Shore
- William Paterson University (N.J.)

<https://www.aascu.org/news/transformation-accelerator-cohort/>

Please join the effort!

Ralf.Peetz@csi.cuny.edu

Katrina.Fama@csi.cuny.edu

